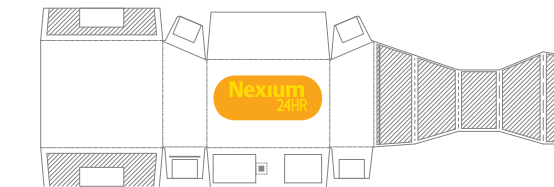
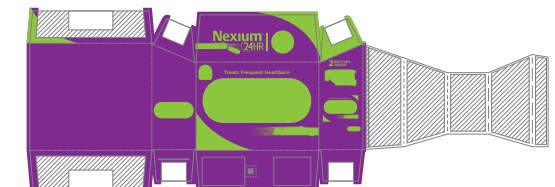


Emboss -  
 Full size file on Emboss layer\*  
 \* There are two levels of Embossing.



High Gloss Varnish and Matte Coating -  
 Full size file on Coating layers



OUTSIDE VIEW

**KEEP CARTON FOR COMPLETE WARNINGS AND IMPORTANT INFORMATION.**

**Drug Facts**  
**Active ingredient (in each capsule)** Purpose  
 Esomeprazole 20 mg Acid reducer  
 (Each delayed-release capsule corresponds to 22.3 mg esomeprazole magnesium trihydrate)

**Uses**  
 ■ treats frequent heartburn (occurs 2 or more days a week)  
 ■ not intended for immediate relief of heartburn; this drug may take 1 to 4 days for full effect

**Warnings**  
**Allergy alert:**  
 ■ Do not use if you are allergic to esomeprazole.  
 ■ Esomeprazole may cause severe skin reactions. Symptoms may include: ■ skin reddening ■ blisters ■ rash  
 If an allergic reaction occurs, stop use and seek medical help right away.  
**Do not use if you have:**  
 ■ trouble or pain swallowing food, vomiting with blood, or bloody or black stools  
 ■ heartburn with lightheadedness, sweating or dizziness  
 ■ chest pain or shoulder pain with shortness of breath; sweating; pain spreading to arms, neck or shoulders; or lightheadedness  
 ■ frequent chest pain  
 These may be signs of a serious condition. See your doctor.  
**Ask a doctor before use if you have**  
 ■ had heartburn over 3 months. This may be a sign of a more serious condition.  
 ■ frequent wheezing, particularly with heartburn  
 ■ unexplained weight loss  
 ■ nausea or vomiting ■ stomach pain  
**Ask a doctor or pharmacist before use if you are**  
 ■ taking a prescription drug. Acid reducers may interact with certain prescription drugs.  
**Stop use and ask a doctor if**  
 ■ your heartburn continues or worsens  
 ■ you need to take this product for more than 14 days

**Drug Facts (continued)**  
 ■ you need to take more than 1 course of treatment every 4 months  
 ■ you get diarrhea ■ you develop a rash or joint pain  
 if pregnant or breast-feeding, ask a health professional before use. **Keep out of reach of children.** In case of overdose, get medical help or contact a Poison Control Center right away.

**Directions**  
 ■ adults 18 years of age and older  
 ■ this product is to be used once a day (every 24 hours), every day for 14 days  
 ■ may take 1 to 4 days for full effect  
**14-Day Course of Treatment**  
 ■ swallow 1 capsule with a glass of water before eating in the morning  
 ■ take every day for 14 days  
 ■ do not take more than 1 capsule a day  
 ■ swallow whole. Do not crush or chew capsules.  
 ■ do not use for more than 14 days unless directed by your doctor  
**Repeated 14-Day Courses (if needed)**  
 ■ you may repeat a 14-day course every 4 months  
 ■ do not take for more than 14 days or more often than every 4 months unless directed by a doctor  
 ■ children under 18 years of age: ask a doctor before use. Heartburn in children may sometimes be caused by a serious condition.

**Other information**  
 ■ read the directions and warnings before use  
 ■ keep the carton. It contains important information.  
 ■ store at 20-25°C (68-77°F)

**Inactive ingredients**  
 corn starch, D&C red no. 28, FD&C blue no. 1, FD&C red no. 40, ferric oxide, gelatin, glyceryl monostearate, hydroxypropyl cellulose, hypromellose, magnesium stearate, methacrylic acid copolymer, pharmaceutical ink, polysorbate 80, sucrose, talc, titanium dioxide, triethyl citrate

**Questions or comments?**  
 call toll-free weekdays 9 AM to 5 PM EST at 1-800-245-1040

**Tips for Managing Heartburn**  
 • Avoid foods or drinks that are more likely to cause heartburn, such as rich, spicy, fatty and fried foods, chocolate, caffeine, alcohol and even some acidic fruits and vegetables.  
 • Eat slowly and do not eat big meals.  
 • Do not eat late at night or just before bedtime.  
 • Do not lie flat or bend over soon after eating.  
 • Raise the head of your bed.  
 • Wear loose-fitting clothing around your stomach.  
 • If you are overweight, lose weight.  
 • If you smoke, quit smoking.

**See new warning information**  
**Treats Frequent Heartburn**

**Nexium 24HR**  
 esomeprazole magnesium delayed-release capsules 20 mg/acid reducer

**28 CAPSULES**  
 Two 14-day courses of treatment

**THIS PACKAGE FOR HOUSEHOLDS WITHOUT YOUNG CHILDREN.**

**Easy Open Cap!**

**2 BOTTLES INSIDE**  
**EASY OPEN CAP!**

**Do Not Use if seal under bottle cap imprinted with "SEALED for YOUR PROTECTION" or yellow band around the center of each capsule is broken or missing.**

**128 CODE AREA** (multiple locations)

**MICRO PRINT LOCATION** (multiple locations)

**FPO**  
 3 0573 2450 28 5

**200609**

128 CODE AREA - SUBSET C 10 MIL DENSITY WITH 4 OR 6 DIGITS (CODE TO EXTEND TO EDGE OF FLAP - UNVARNISHED) PRINTED SIDE OF CARTON

LOT & EXP AREA. DARK COLOR FOR LASER PRINTING.  
 3/16" DATA MATRIX CODE WITH 1/8" QUIET ZONE ON ALL SIDES

PRODUCTION

Job Information	Color Legend									
Date 07-SEP-2022 Pass # 1 Component # 200609 Drawing # DRG-0679	<table border="1"> <tr> <td>PROCESS CYAN</td> <td>PANTONE RHODAMINE RED C</td> <td>PROCESS YELLOW</td> <td>PROCESS BLACK</td> </tr> <tr> <td>PANTONE 2607 C</td> <td>EMBOSSING</td> <td>EMBOSSING 2ND LEVEL</td> <td>HIGH GLOSS UV COATING</td> <td>MATTE COATING</td> </tr> </table>	PROCESS CYAN	PANTONE RHODAMINE RED C	PROCESS YELLOW	PROCESS BLACK	PANTONE 2607 C	EMBOSSING	EMBOSSING 2ND LEVEL	HIGH GLOSS UV COATING	MATTE COATING
PROCESS CYAN	PANTONE RHODAMINE RED C	PROCESS YELLOW	PROCESS BLACK							
PANTONE 2607 C	EMBOSSING	EMBOSSING 2ND LEVEL	HIGH GLOSS UV COATING	MATTE COATING						
Identification	Printer & User Notes									
<b>HALEON U.S. Artwork</b> Warren, NJ 07059 Graphic Artist: Julio Diaz P1.1	PRINTER TO REPLACE ALL FPO (For Position Only) CODES WITH SCANNABLE ART. PRINTER RESPONSIBLE FOR ALL TRAPPING, BLEEDS, COATINGS AND RESOLUTION. PRINTER AND USERS RESPONSIBLE FOR PROPER LICENSING OF ALL FONTS USED IN THIS ARTWORK.									

**ELECTRONIC VERIFICATION CODES (EVC) = 200609**  
**CODE COLOR = Process Black**

DRUG FACTS TEXT DEFINED	TYPE SIZE
• DRUG FACTS TITLE	9.0 pt
• DRUG FACTS CONTINUED	8.0 pt
• HEADINGS	8.0 pt
• SUBHEADINGS/BODY TEXT	6.0 pt
• LEADING	6.5 pt
• # OF CHARACTERS PER INCH	<39
• BULLETS	5.0 pt
• SPACE BEFORE BULLET	2 ems
• BARLINES, HAIRLINES	1.5 pt, .5 pt
• SPACE BETWEEN HAIRLINES AND BOX END	2 spaces

**PRINTER NOTE:** Special Finishes - UV Coating, Matte Coating, and Embossing. Are included in the Adobe Illustrator File on a "Template" layer and are hidden. Printer must open Art in Adobe Illustrator in order to access and process layers.