

## Drug Facts

### Active ingredients

Camphor 3.1%	Topical analgesic
Capsaicin 0.025%	Topical analgesic
Menthol 10%	Topical analgesic
Methyl salicylate 15%	Topical analgesic

### Uses

Temporarily relieves minor aches and pains of muscles and joints associated with:

- arthritis ■ simple backache ■ sprains
- strains ■ bruises

### Warnings

#### For external use only

- avoid contact with eyes. If eye contact occurs, rinse thoroughly with water.

#### Do not use

- on wounds or damaged skin
- with a heating pad
- if you are allergic to any ingredients in this product

#### Ask a doctor before use if you have

- redness over the affected area

#### When using this product

- do not bandage tightly

#### Stop use and ask a doctor if

- condition worsens or if symptoms last for more than 7 days
- symptoms clear up and occur again within a few days
- rash, itching or skin irritation develops

If pregnant or breast-feeding, ask a health professional before use.

Keep out of reach of children. If swallowed, get medical help or contact a Poison Control Center right away.

### Directions

- use only as directed
- adults and children 12 years and older: apply to affected area not more than 3 to 4 times daily
- children under 12 years of age: consult your doctor
- wash hands after applying

**Other information** ■ store between 20-25°C (68-77°F)

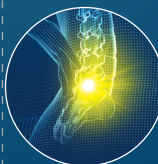
### Inactive ingredients

carbomer homopolymer, cetyl alcohol, cetyl esters wax, emulsifying wax, oleth-3-phosphate, purified water, sodium hydroxide, stearic acid

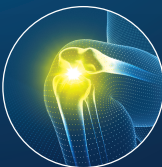
**Questions or comments?** Call toll-free 1-855-297-3031

### Purposes

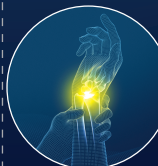
## DEEP PENETRATING RELIEF



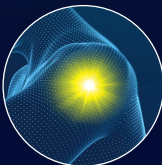
BACK &  
BODY ACHES



ARTHRITIS &  
JOINT PAIN



SPRAINS &  
STRAINS



SORE  
MUSCLES

DOES NOT CONTAIN THE SAME  
ACTIVE INGREDIENT AS ADVIL

HALEON

# Advil

## TARGETED RELIEF

### PAIN RELIEVING CREAM

# 4

POWERFUL  
PAIN FIGHTING  
INGREDIENTS



Arthritis &  
Joint Pain



Back &  
Body Aches



Sprains &  
Strains



Sore  
Muscles



MASSAGE  
APPLICATOR

Find directions on how to  
remove the safety seal

FOR EXTERNAL USE ONLY

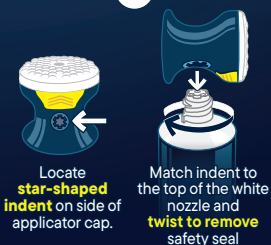
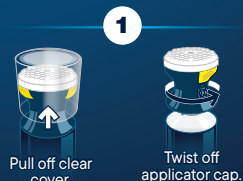
NET WT. 71 g (2.5 oz)

STARTS WORKING  
ON CONTACT

UP TO  
FOR 8 HRS

## OF POWERFUL RELIEF

HOW TO REMOVE  
SAFETY SEAL & USE



Squeeze tube to release  
cream and apply to skin

Clean applicator with a  
towel or absorbent paper

Do not use if safety seal on tube nozzle is broken or missing.



3 05736 55545 0

Distributed by: Haleon, Warren, NJ 07059

For most recent product information, visit [www.Advil.com](http://www.Advil.com)

Trademarks are owned by or licensed to the Haleon group of companies.

© 2025 Haleon group of companies or its licensor.

Made in Canada