

1 1 9 3



Cherry Vanilla Flavour  
Colour free oral liquid

Please scan this code  
for more information  
e-leaflet  
about this medicine.



1 MONTH to 1 YEAR

**ACTIVE INGREDIENTS**

This oral liquid contains  
**PARACETAMOL 100 mg/mL**

**WHAT THIS MEDICINE IS USED FOR**

Effective temporary relief of fever and pain associated with:  
• Teething • Immunisation  
• Earache • Headache  
• Cold & flu symptoms

**WARNINGS**

**Do not use this medicine**

- For infants under 1 month
- If your child is using other medicines containing paracetamol, except on medical advice
- For more than 48 hours at a time, except on medical advice. Keep to the recommended dose
- If any of the seals on this packaging are broken
- If the package use-by date has expired

**Ask a doctor before use if your child**

- Has liver or kidney problems
- Weighs less than 4 kg or more than 12 kg

**Stop use and see your doctor if your child**

Has an allergic skin reaction, shortness of breath or wheezing after taking this medicine

For children under 3 months: If fever persists for more than 24 hours (4 doses) seek medical advice.

**While using this product**  
If an overdose is taken or suspected, ring the Poisons Information Centre (Australia: 13 11 26) or go to the hospital immediately, even if your child feels well because of the risk of delayed, serious liver damage if left untreated.

Continued →

**WARNINGS (continued)**

**Contains:** saccharin, hydroxybenzoates.

**DIRECTIONS FOR USE**

- Please read and retain the carton
- Shake the bottle well
- Use the dosing device provided to accurately measure
- Measure the correct dose based on the dosage table below
- Calculate correct dose based on child's weight. If weight is unknown, use the child's age
- Seek medical advice before giving to children under 6 months

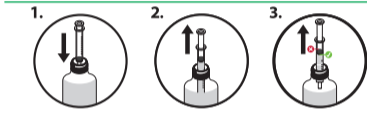
| Age         | Average Weight | Dose       |
|-------------|----------------|------------|
| 1–3 Months  | 4–6 kg         | 0.6–0.9 mL |
| 3–6 Months  | 6–8 kg         | 0.9–1.2 mL |
| 6–12 Months | 8–10 kg        | 1.2–1.5 mL |
| 1–2 Years   | 10–12 kg       | 1.5–1.8 mL |

- Repeat 4–6 hourly if required (maximum 4 times within 24 hours)
- Can be given with water or fruit juice if preferred by your child
- Further information is available via the QR code on the pack.

**How to dose**

- Cradle your baby in one arm and gently slide the syringe into the mouth
- Slowly squirt a small amount of the medicine inside the cheek next to the tongue
- Wait until they swallow the liquid entirely before giving the rest of the dose.

**How to use the dosing device**



1. Push the plunger fully in to close the dosing device, then insert the device into bottle.
2. Gently pull plunger to the correct dose for your child.
3. Measure the liquid to the line as shown by ✓. Check dose in device is correct before use.

Continued →

**DIRECTIONS FOR USE (continued)**

**After using this medicine**

- Wipe neck of bottle clean.
- Push the cap down and turn it to close cap tightly, then turn backwards until you hear a clicking sound.
- Separate the dosing device parts and hand wash with warm water only. Do not use detergents or dishwasher.
- Allow to air dry before reassembling.
- Dispose of the dosing device when the medicine is finished.

Store below 25°C.

Do not refrigerate.

This medicine contains:

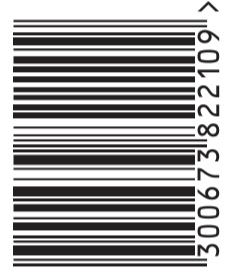
No artificial colours

Haleon  
Sydney, NSW, Australia

Trade Marks are owned by or licensed to the Haleon group.  
©2022 Haleon or its licensor.

AU: 1800 028 533

www.childrenspanadol.com.au



**PHARMACY MEDICINE**  
KEEP OUT OF REACH OF CHILDREN

HALEON



1 MONTH to 1 YEAR  
Paracetamol 100 mg/mL

**FAST PAIN RELIEF**

Reduces fever  
Gentle on stomach

**DOSING DEVICE**



Cherry Vanilla Flavour  
Colour free oral liquid

20 mL

9000708



1 1 9 3